

# PC8800-Fisher

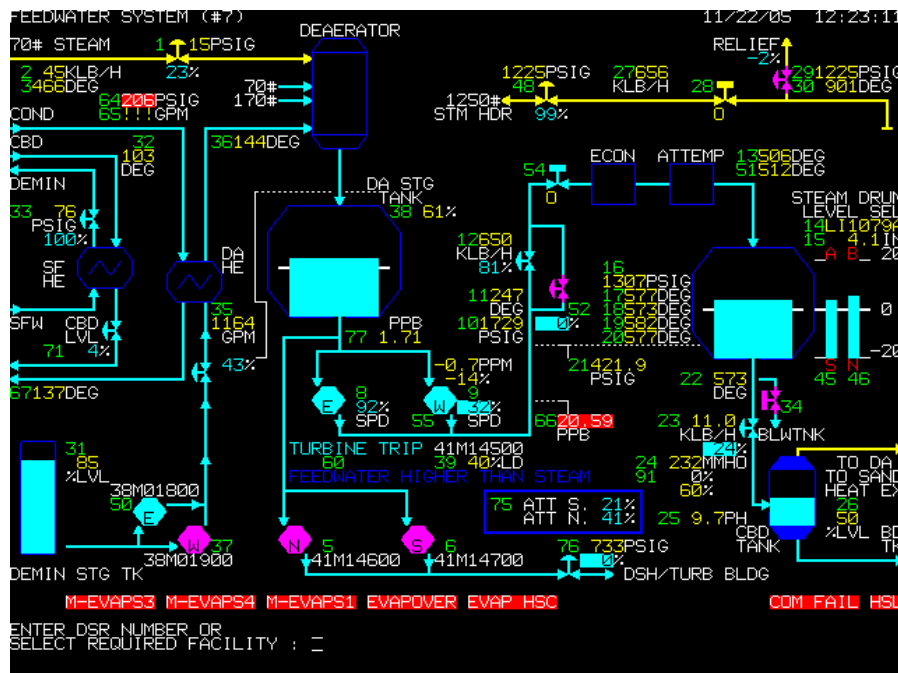
## An Emulator to Replace Fisher Provox DC6300/6500 VDUs

Fisher Provox DC6300 and DC6500 VDUs (Video Display Units), often used in paper mill and other industrial control rooms, are difficult and expensive to maintain. Mirador Software's Fisher VDU emulator allows replacing a VDU with standard, low-cost PC hardware. The emulator supports all the functions of the original device. In addition, it provides support for printing screens using any HP PCL3 compatible printer. The emulator has been successfully field tested on Fisher systems.

The emulator allows replacing the following Fisher VDU part numbers:

- 12B7573X012 (60Hz Line Freq., 19.2K Baud Serial Rate)
- 12B7573X022 (60Hz Line Freq., 38.4K Baud Serial Rate)
- 12B7573X032 (50Hz Line Freq., 19.2K Baud Serial Rate)
- 12B7573X042 (50Hz Line Freq., 38.4K Baud Serial Rate)

Below is a typical screen from the emulator.



The emulator is available as a Windows application or as a Linux application. The Linux version is especially suitable for use on dedicated / embedded PC hardware in mission-critical applications. This version is available bundled with operating system and an inexpensive, rugged small form factor computer.

Mirador Software • 1040 West End Blvd. • Winston-Salem, NC 27101  
Telephone 770-850-9100 • FAX 770-881-7958 • e-mail [sales@pc8800.com](mailto:sales@pc8800.com) • web <http://www.pc8800.com>

## DC6501 and DC6301 Keyboard Replacement Solutions

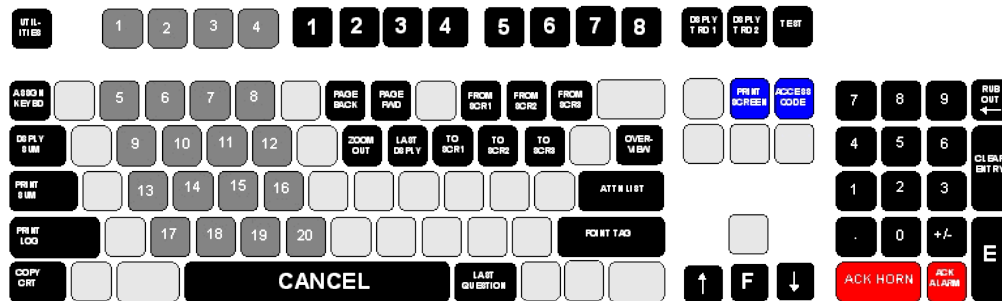
Mirador's PC8800-Fisher emulator can also allow replacing the companion DC6501 and DC6301 keyboards with PC keyboards. The DC6501 main keyboard is functionally separate from the VDU. It has its own power supply and serial connection to the system host computer (9600 baud). This keyboard includes a four-position key switch for setting access level and alarm buzzer. The DC6301 configuration keyboard plugs in to the DC6501.

The Fisher keyboards are emulated with standard PC keyboards. A custom keycap set is available for installation on a 104-key PC keyboard to emulate the DC6501. The alarm can be a piezo buzzer or other device connected at the PC parallel port, or a PC sound card and speaker. The four-position keyswitch is replaced with a mechanism for entering access codes by way of the keypad. Key layouts on PC keyboards are shown below.

The emulator also allows replacing the following Fisher keyboards:

- DC6501, part no. 47A5793X07R
- DC6301, part no. 37A2729X032

The following illustration shows a PC keyboard configured by Mirador with custom caps for use with PC8800-Fisher as a DC6501 keyboard replacement.



The following illustration shows a PC keyboard configured by Mirador with custom caps for use with PC8800-Fisher as a DC6301 keyboard replacement.

